

## Looking for best equipment for your next concrete works?

Carmix is the number one off road, mobile self loading concrete mixer in the world.

Producing machines which are easy to use, and ideal for producing and distributing concrete at the most difficult sites, in the most congested traffic or on the remotest islands.



These are just several unique features of Carmix that makes it the industry leader:

- **Front cab and engine at the back** to guarantee enhanced safety and comfort for the operator.
- **Load Cells electronic weighing system** to ensure maximum accuracy in the production of concrete.
- **Drum unit rotating through 270°** to easily unload on the four sides of the off-road mobile mixer machines (it turns all the way around the vehicle without it having to be moved).
- **Articulated loader with hydraulic door** to prevent unwanted dispersion of the material
- **Hopper on the loader** to ensure **maximum precision when loading materials.**
- **Fully automated system** for ease of use, also suitable for inexperienced operators.

The range of self loading concrete plants Carmix consists of eight models, with a capacity starting from 1.3 cubic yard and **up to 6.5 cubic yards**, all of which are extremely compact and maneuverable.

# Self Loading Concrete Mixers



www.carmix-usa.com

+1 702 666 7323

1070 W Horizon Ridge Pkwy, Henderson, NV 89012



## We are proud to present the Carmix machine **Self loading mixer CARMIX 2.5TT**

All-wheel drive concrete mixer with self-loading CARMIX 2.5TT has a high performance (more than 104 yd<sup>3</sup> per shift) and is optimally suited for the construction of large and medium-sized objects, high-rise buildings, monolithic structures, as well as for the manufacture of ready-mixed concrete. The volume of the mixing drum is 911 gal., the loading bucket with a hydraulic damper-105 gal. Mobile concrete plant itself loads inert materials and kneads the concrete of the desired brand according to a given recipe. Stability and manoeuvrability allow the CARMIX 2.5TT to drive into hard-to-reach places that a conventional concrete mixer cannot reach.

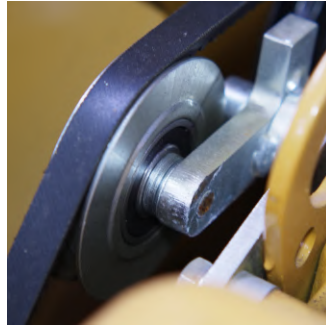
# Self Loading Concrete Mixers



www.carmix-usa.com

+1 702 666 7323

1070 W Horizon Ridge Pkwy, Henderson, NV 89012



## TECHNICAL CHARACTERISTICS

Model: Carmix 2,5TT  
Country of origin : Italy

Capacity:  
87 yd<sup>3</sup> per 8 hours shift

### ■ Mixing unit

- Drum capacity 911 gal.
- Concrete drum output: 3.9 yd<sup>3</sup>/IN. EN 206-1 IN SLUMP S1 Class, yield not vibrate.
- Double mixing screws, cover for emergency unloading. Discharging by reversing drum.

### ■ Engine

- Perkins 1104 D-44TA Turbo-Diesel, water cooled, 4 cylinders. Maximum power 83 kW (111 HP) set at 2.300 rpm.
- Engine mounted on transversal on the rear.

### ■ Bucket capacity

- Effective capacity per load 88 gal., complete with hydraulic opening gate.

### ■ Tanks

- Water: 2x88 gal. Diesel: 25 gal. Hydraulic oil: 17.6 gal.

### ■ Transmission

- Hydrostatic Bosch Rexroth. Pump and motor are connected to the differentials through a 2 speed reducer (working and transfer). 4 wheel drive and steering.

### ■ Speed

- Working speed from 0 to 5.6 mph, road transfer from 0 to 15.5 mph.

### ■ Cabin

- Front cabin on side of loading shovel
- ROPS-FOPS type complete with double closing door.
- Clima, air conditioning heater available upon request.

### ■ Hydraulic system

- Three circuits. 2 variable outlet pumps for hydrostatic transmission and drum rotation.
- 2 gear pumps for services. Inlet and outlet filter. Heat exchanger water/oil-air type.

# Self Loading Concrete Mixers



www.carmix-usa.com

+1 702 666 7323

1070 W Horizon Ridge Pkwy, Henderson, NV 89012



## ■ Weighing

- Electronic system. "Load cells" acting on the drum, display and printer in the cab (on the request).

## ■ Joymix

- All hydraulic functions of shovel controlled by a single – fully servo controlled Joystick.

## ■ Water system

- Self contained. Hydraulic driven water pump, water meter. High pressure water pump (on request).

## ■ Chute

- Hydraulic slewing and hydraulic tilting controlled from the lab.

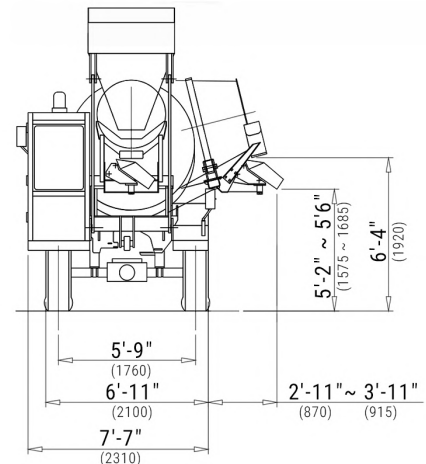
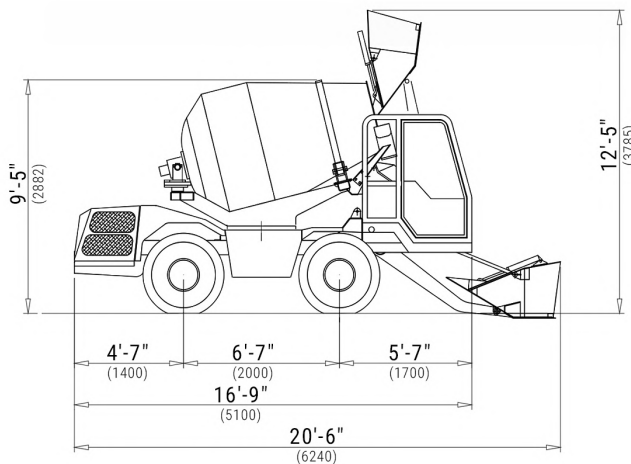
## ■ Warranty :

-1 years.

Complete with:

- Tool kit
- High pressure washing pump

Weighing system load cell



# Self Loading Concrete Mixers



[www.carmix-usa.com](http://www.carmix-usa.com)

+1 702 666 7323

1070 W Horizon Ridge Pkwy, Henderson, NV 89012

Price: **\$110,000.00**

**Contact us for more details!**

Address:

1070 W Horizon Ridge Pkwy, Henderson, NV 89012

Phone:

+1 702 666 7323

Email:

[info@carmix-usa.com](mailto:info@carmix-usa.com)

Web:

[carmix-usa.com](http://carmix-usa.com)

Open

Monday - Saturday 8am to 8pm